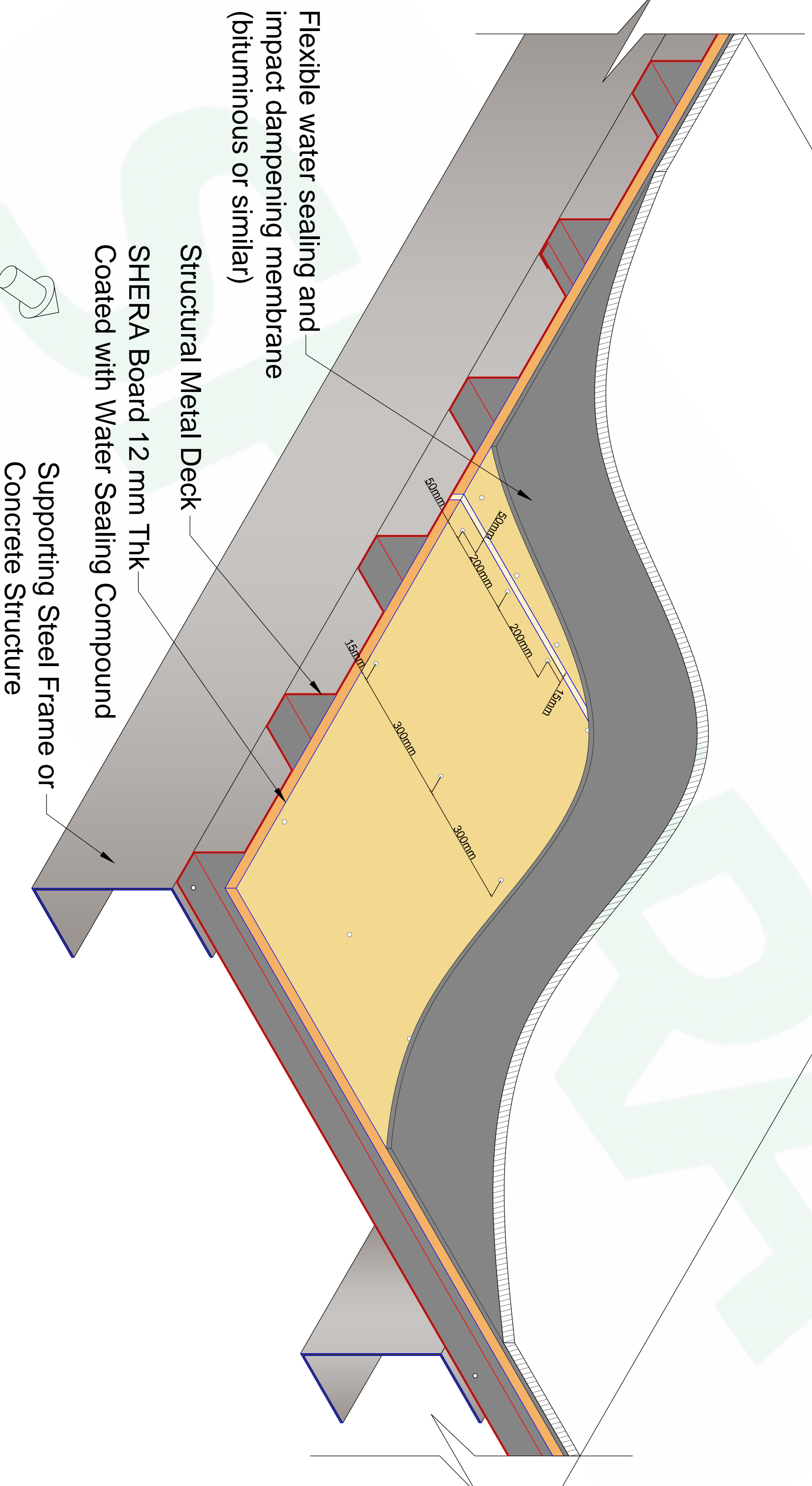


OPTION 01 FOR FLAT ROOFING CONSTRUCTION WITH METAL DECK

SHERA™

The Roofing Material on the top



ISOMETRIC VIEW

- NOTES:
1. ALL DIMENSIONS ARE IN mm, UNLESS OTHERWISE STATED OR SPECIFIED AND NOTED.
 2. ANY DISCREPANCIES ON THE DRAWINGS TO BE REPORTED IMMEDIATELY TO THE SHERA SOLUTION TEAM.
 3. THE CONTRACTOR IS RESPONSIBLE FOR THE DIMENSIONAL ACCURACY OF THE WORKS/DIMENSIONS TO BE CHECKED ON SITE PRIOR TO WORK COMMENCEMENT.
 4. THE CONTRACTOR IS RESPONSIBLE FOR THE CO-ORDINATION OF SERVICES INTO THE WORKS AS MAY BE REQUIRED.
 5. DRAWINGS ARE TO BE READ IN CONJUNCTION WITH THE OTHER ELECTRICAL AND PLUMBING CONSULTANTS.

MATERIAL SPECIFICATION

APPLICATION DETAILS	CLADDING
SHERA BOARD	1 LAYER OF SHERA BOARD 12mm THICK
FRAME	STRUCTURAL METAL DECK
SEALANT	BOSS PU-25 OR SILICON SEALANT FOR GAP BETWEEN TWO SHERA BOARDS AND AT CONTROL JOINTS
SPACING	SCREW
PERIPHERY OF BOARD 200mm @C/C	SHERA FIX - W 32 FOR STEEL FRAME
INTERMEDIATE OF BOARD 300mm @C/C	SHERA FIX - W 32 FOR STEEL FRAME
	SHERA FIX - T FOR WOODEN FRAME

REVISION NO	DATE	DESCRIPTION

DWG TITLE: TYPICAL APPLICATION OF SHERA BOARDS FOR FLAT ROOF SUBSTRATE

DWG CODE: 000000000000 PROJECT NO: 000000000

DWG NO: 001 DATE: 26-03-2014

DESIGN BY: LV SCALE: N.T.S.

CHECKED BY: TN SHEET NO. 1 OF 5

APPROVED BY: SC

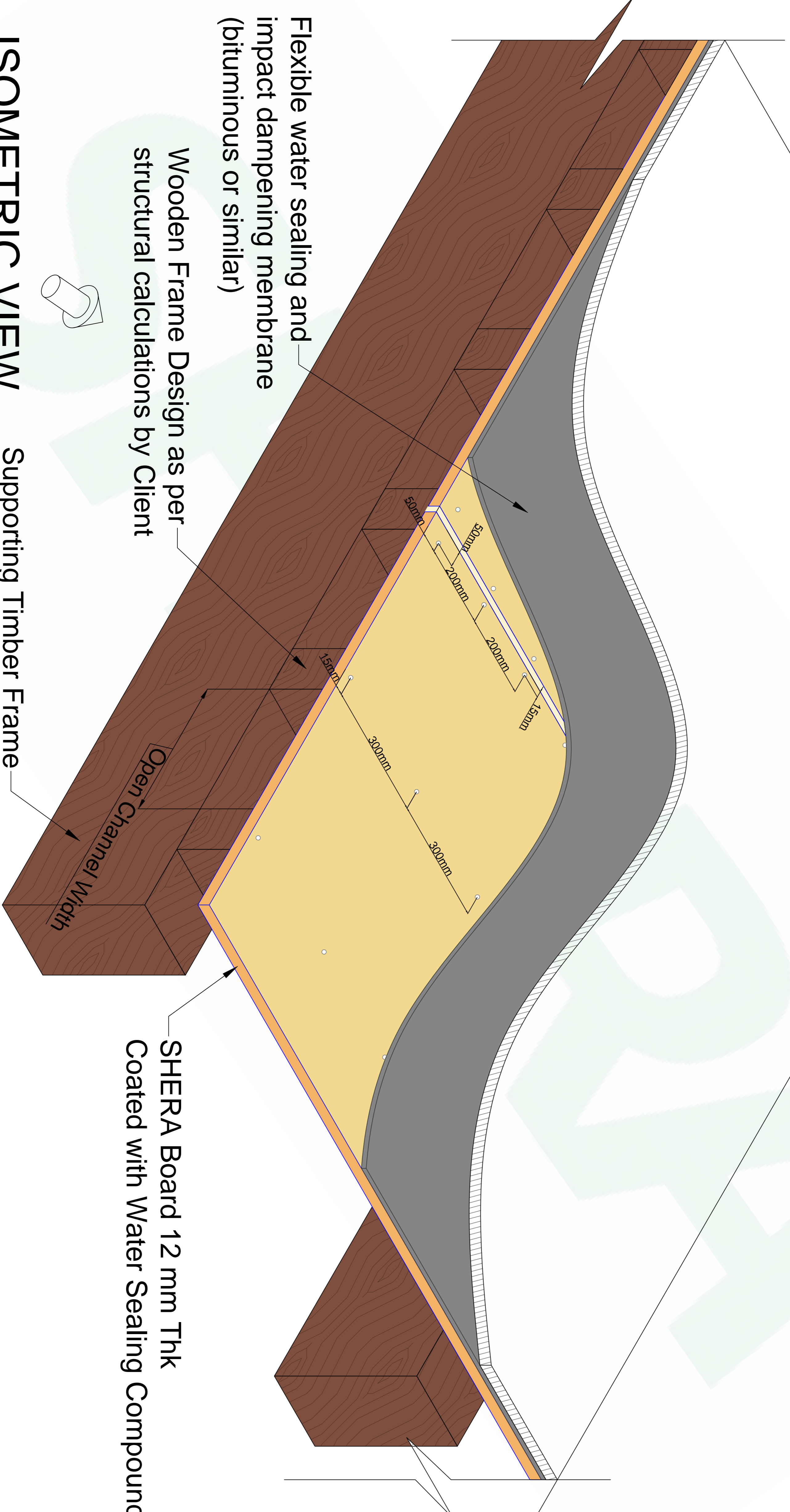
MAHAPHANT Mahaphant Fibre-Cement (South Asia) Pvt.Ltd.

#06, Darnji Sharnji Udyog Bhavan,
Ground floor, Veera Desai Road,
Andheri (west), MUMBAI-400 058.
Tel. No.: +91-22-26744343 / 4646 Fax No.: +91-22-26734115
Email: info@shera.in Website: www.shera.in

OPTION 02 FOR FLAT ROOFING CONSTRUCTION WITH WOODEN FRAME

SHERA™

The Roofing Material on the top



ISOMETRIC VIEW

Supporting Timber Frame or Concrete Structure

- NOTE :**
1. We should recommend 12 mm SHERA Boards for open channel width less than 100 mm.
 2. 15 mm SHERA Boards for the open channel width between 100 mm to 300 mm.
 3. The Board to board joint should be on the frame.

- NOTES:**
1. ALL DIMENSIONS ARE IN mm. UNLESS OTHERWISE STATED OR SPECIFIED AND NOTED.
 2. ANY DISCREPANCIES ON THE DRAWINGS TO BE REPORTED IMMEDIATELY TO THE SHERA SOLUTION TEAM.
 3. THE CONTRACTOR IS RESPONSIBLE FOR THE DIMENSIONAL ACCURACY OF THE WORKS/DIMENSIONS TO BE CHECKED ON SITE PRIOR TO WORK COMMENCEMENT.
 4. THE CONTRACTOR IS RESPONSIBLE FOR THE CO-ORDINATION OF SERVICES INTO THE WORKS AS MAY BE REQUIRED.
 5. DRAWINGS ARE TO BE READ IN CONJUNCTION WITH THE OTHER ELECTRICAL AND PLUMBING CONSULTANTS.

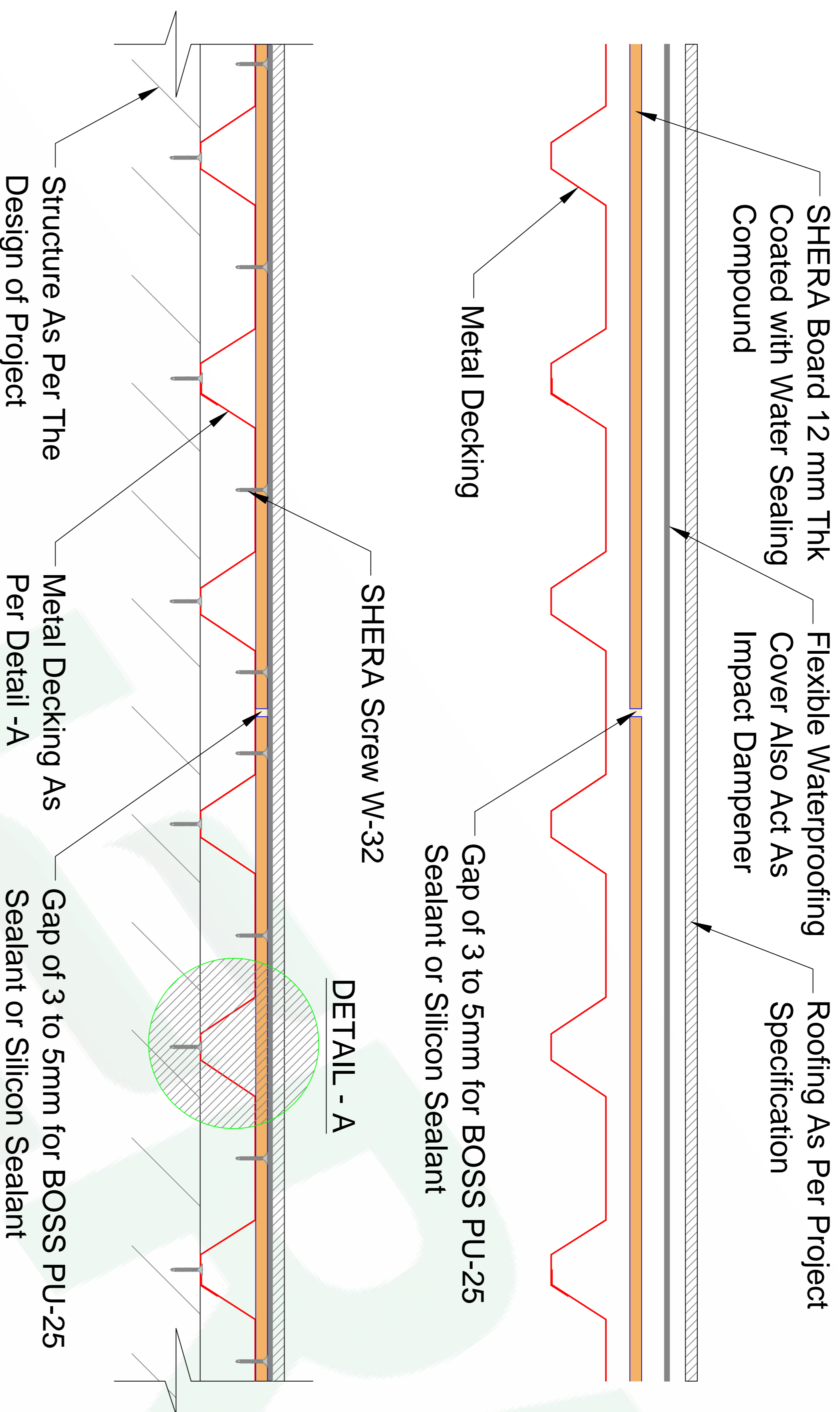
MATERIAL SPECIFICATION

APPLICATION DETAILS	CLADDING
SHERA BOARD	1 LAYER OF SHERA BOARD 12mm THICK
FRAME	STRUCTURAL METAL DECK
SEALANT	BOSS PU-25 OR SILICON SEALANT FOR GAP BETWEEN TWO SHERA BOARDS AND AT CONTROL JOINTS
SPACING	SCREW
PERIPHERY OF BOARD 200mm @C/C	SHERA FIX - W 32 FOR STEEL FRAME
INTERMEDIATE OF BOARD 300mm @C/C	SHERA FIX - W 32 FOR STEEL FRAME
	SHERA FIX - T FOR WOODEN FRAME

REVISION NO	DATE	DESCRIPTION

DWG TITLE:	
TYPICAL APPLICATION OF SHERA BOARDS FOR FLAT ROOF SUBSTRATE	
DWG CODE:00000000000	PROJECT NO:000000000
DWG NO: 002	DATE: 26-03-2014
DESIGN BY: LV	SCALE: N.T.S
CHECKED BY: TN	SHEET NO.
APPROVED BY: SC	2 OF 5

MAHAPHANT
 Mahaphant Fibre-Cement (South Asia) Pvt.Ltd.
 #06, Darnji Sharnji Udyog Bhavan,
 Ground floor, Veera Desai Road,
 Andheri (west), MUMBAI-400 058.
 Tel. No. : +91-22-26744343 / 4646
 Email:info@shera.in
 Fax No. : +91-22-26734115
 Website:www.shera.in



SECTIONAL VIEW

NOTE :

1. The metal deck to be used should be selected as per structural requirement.
2. The channel openings as shown above should not be over 100mm if used with 12mm thk SHERA Board.
3. The thickness of metal deck should be atleast 0.75mm to be able to give the strong grip to screws.
4. SHERA Boards of 12mm thickness are recommended for load bearing metal decking with channel opening of not more than 100mm.
5. Acceptable loading for 12mm thk SHERA Board on metal deck with channel opening less than 100mm is Uniform Load = 500 Kg/m²
Point Load = 200 Kg
6. SHERA Boards of 10mm thickness are recommended as substrate on the flat structural member or metal deck with channel opening not more than 25mm.
7. SHERA Boards of 10mm thickness can be used as a substrate with a regular frame grid with frame spacing of 600mm provided walkability is restricted on the frame only, or if the roofing material is walkable and specified for human access.

- NOTES:
1. ALL DIMENSIONS ARE IN mm. UNLESS OTHERWISE STATED OR SPECIFIED AND NOTED.
 2. ANY DISCREPANCIES ON THE DRAWINGS TO BE REPORTED IMMEDIATELY TO THE SHERA SOLUTION TEAM.
 3. THE CONTRACTOR IS RESPONSIBLE FOR THE DIMENSIONAL ACCURACY OF THE WORKS DIMENSIONS TO BE CHECKED ON SITE PRIOR TO WORK COMMENCEMENT.
 4. THE CONTRACTOR IS RESPONSIBLE FOR THE CO-ORDINATION OF SERVICES INTO THE WORKS AS MAY BE REQUIRED.
 5. DRAWINGS ARE TO BE READ IN CONJUNCTION WITH THE OTHER ELECTRICAL AND PLUMBING CONSULTANTS.

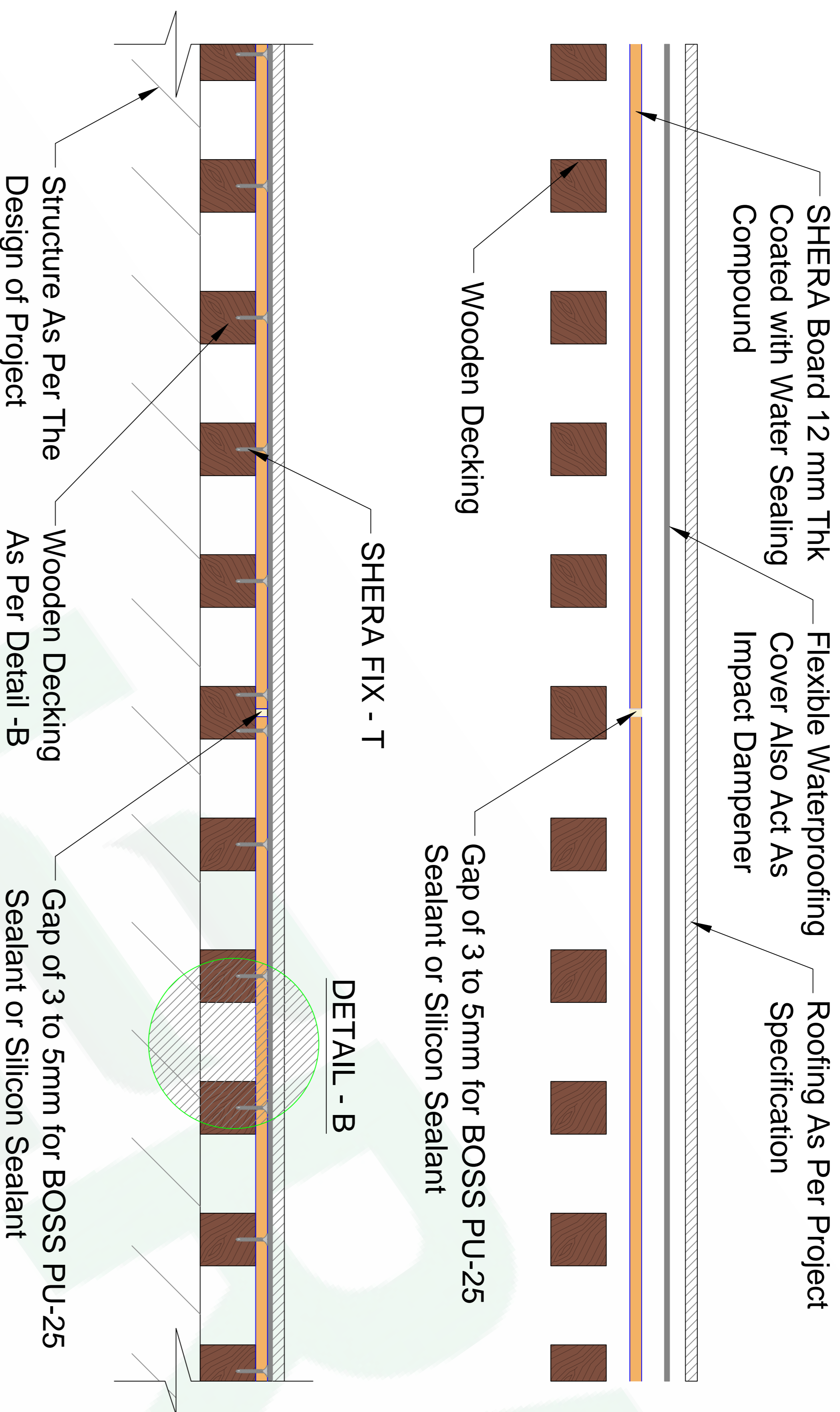
MATERIAL SPECIFICATION

APPLICATION DETAILS	CLADDING
SHERA BOARD	1 LAYER OF SHERA BOARD 12mm THICK
FRAME	STRUCTURAL METAL DECK
SEALANT	BOSS PU-25 OR SILICON SEALANT FOR GAP BETWEEN TWO SHERA BOARDS AND AT CONTROL JOINTS
SPACING	SCREW
PERIPHERY OF BOARD 200mm @C/C	SHERA FIX - W 32 FOR STEEL FRAME
INTERMEDIATE OF BOARD 300mm @C/C	SHERA FIX - W 32 FOR STEEL FRAME SHERA FIX - T FOR WOODEN FRAME

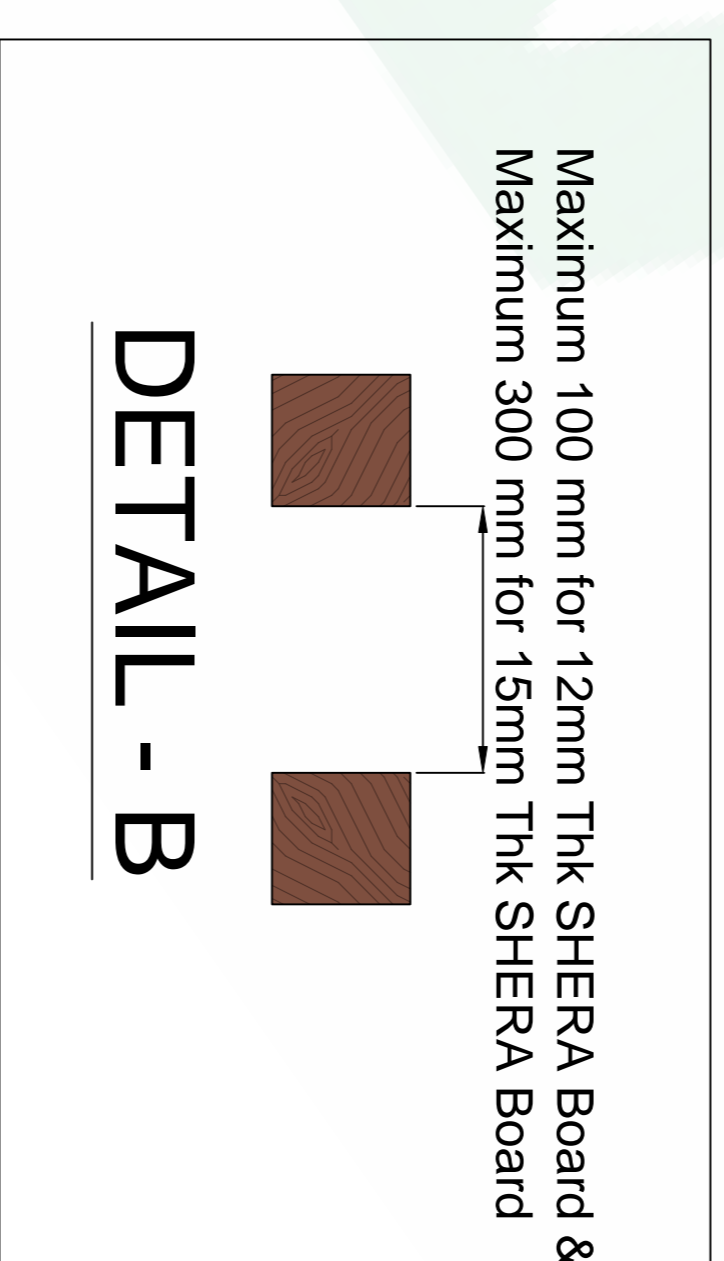
REVISION NO	DATE	DESCRIPTION

DWG TITLE:
TYPICAL APPLICATION OF SHERA BOARDS FOR
FLAT ROOF SUBSTRATE

DWG CODE:0000000000	PROJECT NO:000000000
DWG NO: 003	DATE: 26-03-2014
DESIGN BY: LV	SCALE: N.T.S.
CHECKED BY: TN	SHEET NO. 3 OF 5
APPROVED BY: SC	



SECTIONAL VIEW



NOTE :

1. The Wooden Deck to be used should be selected as per structural requirement.
2. The wooden deck openings as shown above should not be over 100mm if used with 12mm thk SHERA Board and 300mm for 15 mm Thk SHERA Board .
3. SHERA Boards of 10mm thickness are recommended as substrate on the flat structural member or wooden deck with wooden deck opening not more than 25mm.
4. SHERA Boards of 10mm thickness can be used as a substrate with a regular frame grid with frame spacing of 600mm provided walkability is restricted on the frame only, or if the roofing material is walkable and specified for human access.

- NOTES:
1. ALL DIMENSIONS ARE IN mm. UNLESS OTHERWISE STATED OR SPECIFIED AND NOTED.
 2. ANY DISCREPANCIES ON THE DRAWINGS TO BE REPORTED IMMEDIATELY TO THE SHERA SOLUTION TEAM.
 3. THE CONTRACTOR IS RESPONSIBLE FOR THE DIMENSIONAL ACCURACY OF THE WORKS DIMENSIONS TO BE CHECKED ON SITE PRIOR TO WORK COMMENCEMENT.
 4. THE CONTRACTOR IS RESPONSIBLE FOR THE CO-ORDINATION OF SERVICES INTO THE WORKS AS MAY BE REQUIRED.
 5. DRAWINGS ARE TO BE READ IN CONJUNCTION WITH THE OTHER ELECTRICAL AND PLUMBING CONSULTANTS.

MATERIAL SPECIFICATION

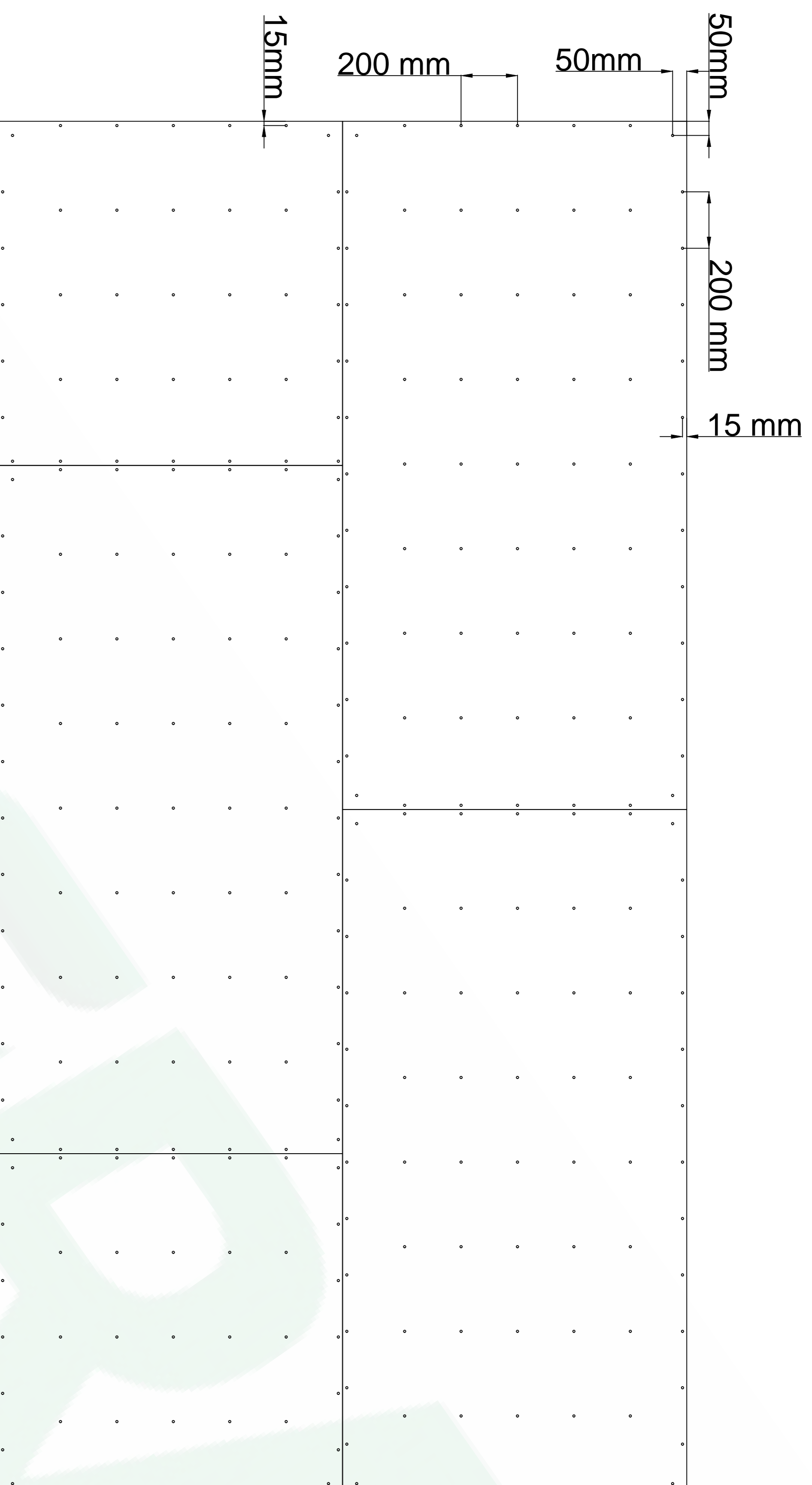
APPLICATION DETAILS	CLADDING
SHERA BOARD	1 LAYER OF SHERA BOARD 12mm THICK
FRAME	STRUCTURAL METAL DECK
SEALANT	BOSS PU-25 OR SILICON SEALANT FOR GAP BETWEEN TWO SHERA BOARDS AND AT CONTROL JOINTS
SPACING	SCREW
PERIPHERY OF BOARD 200mm @C/C	SHERA FIX - W 32 FOR STEEL FRAME
INTERMEDIATE OF BOARD 300mm @C/C	SHERA FIX - W 32 FOR STEEL FRAME SHERA FIX - T FOR WOODEN FRAME

REVISION NO	DATE	DESCRIPTION

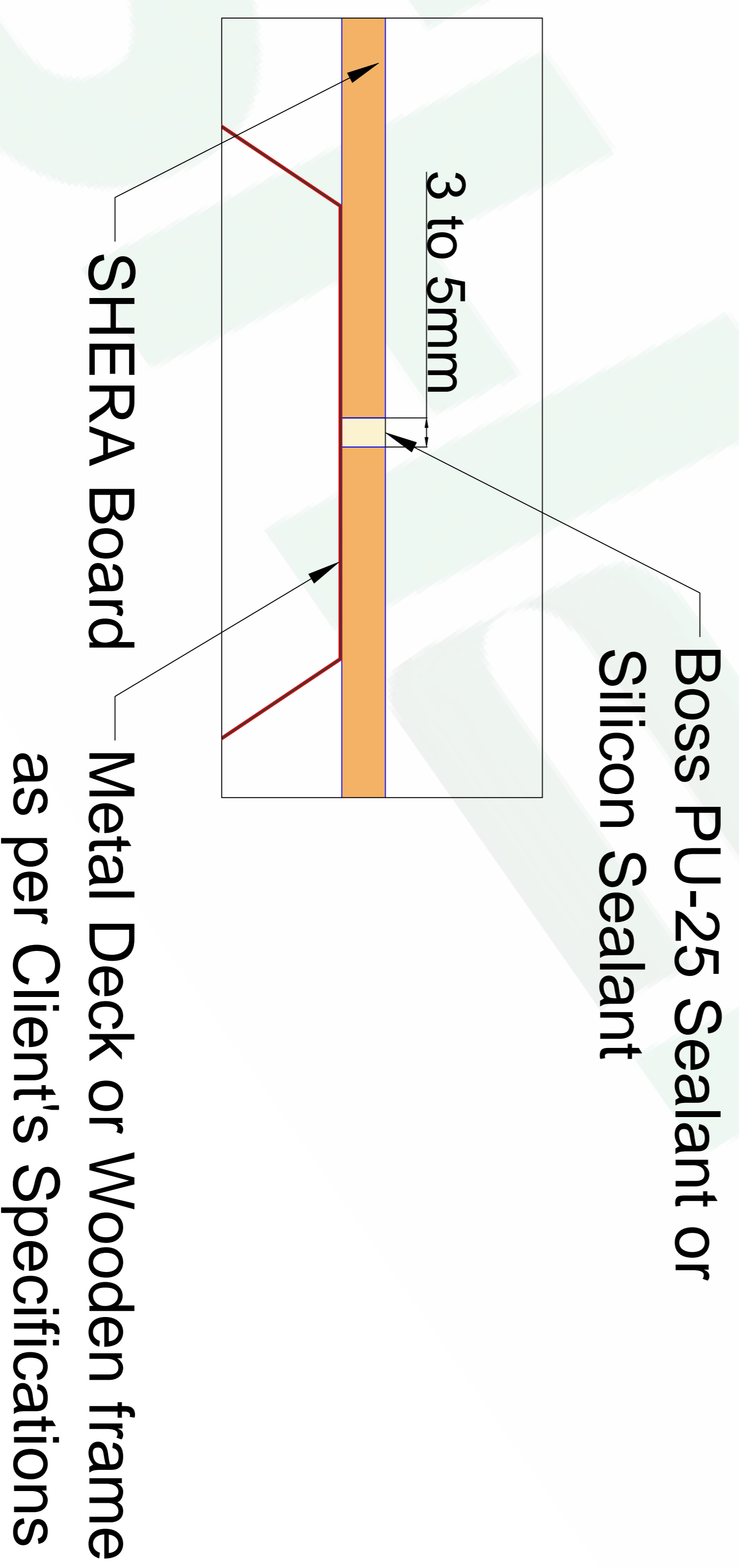
DWG TITLE :

TYPICAL APPLICATION OF SHERA BOARDS FOR FLAT ROOF SUBSTRATE

DWG CODE:00000000000	PROJECT NO:000000000
DWG NO: 004	DATE: 26-03-2014
DESIGN BY: LV	SCALE: N.T.S.
CHECKED BY: TN	SHEET NO. 4 OF 5
APPROVED BY: SC	



BOARD STAGGERED LAYOUT & SCREW SPACING



NOTE :

1. Screw distance from the corner should be minimum 50mm.
2. Screw distance from the edges of boards should be 15mm.
3. We recommend a control joints of 6mm to 12mm at a continuous length of 6mtr.

- NOTES:
1. ALL DIMENSIONS ARE IN mm, UNLESS OTHERWISE STATED OR SPECIFIED AND NOTED.
 2. ANY DISCREPANCIES ON THE DRAWINGS TO BE REPORTED IMMEDIATELY TO THE SHERA SOLUTION TEAM.
 3. THE CONTRACTOR IS RESPONSIBLE FOR THE DIMENSIONAL ACCURACY OF THE WORKS DIMENSIONS TO BE CHECKED ON SITE PRIOR TO WORK COMMENCEMENT.
 4. THE CONTRACTOR IS RESPONSIBLE FOR THE CO-ORDINATION OF SERVICES INTO THE WORKS AS MAY BE REQUIRED.
 5. DRAWINGS ARE TO BE READ IN CONJUNCTION WITH THE OTHER ELECTRICAL AND PLUMBING CONSULTANTS.

MATERIAL SPECIFICATION

APPLICATION DETAILS	CLADDING
SHERA BOARD	1 LAYER OF SHERA BOARD 12mm THICK
FRAME	STRUCTURAL METAL DECK
SEALANT	BOSS PU-25 OR SILICON SEALANT FOR GAP BETWEEN TWO SHERA BOARDS AND AT CONTROL JOINTS
SPACING	SCREW
PERIPHERY OF BOARD 200mm @C/C	SHERA FIX - W 32 FOR STEEL FRAME
INTERMEDIATE OF BOARD 300mm @C/C	SHERA FIX - W 32 FOR STEEL FRAME
	SHERA FIX - T FOR WOODEN FRAME

REVISION NO	DATE	DESCRIPTION

DWG TITLE :
TYPICAL APPLICATION OF SHERA BOARDS FOR
FLAT ROOF SUBSTRATE

DWG CODE:000000000000	PROJECT NO:000000000
DWG NO: 005	DATE: 26-03-2014
DESIGN BY: LV	SCALE: N.T.S
CHECKED BY: TN	SHEET NO.
APPROVED BY: SC	5 OF 5